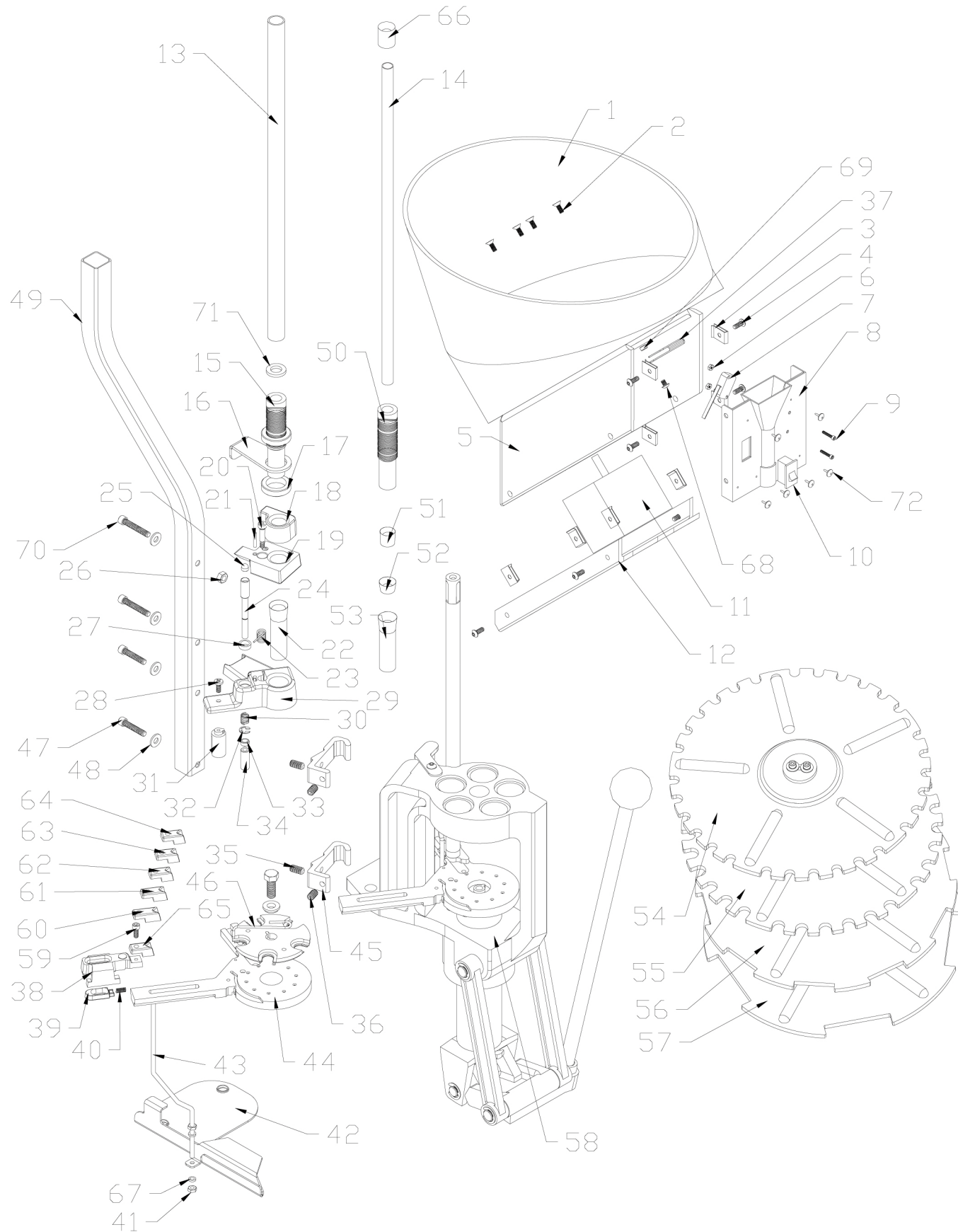


## Bill of Materials



Item No.	Production Part Number	Qty.	Description	Item No.	Production Part Number	Qty.	Description
1	398327	1	CASE FEED BOWL	37	398285	1	CASE FEED DOOR ADJUSTMENT
2	398313	4	10-32 x 3/4 FHSCS	38	398291	1	CASE SLIDE
3	398374	8	10-24 "U" Nut	39	398307	1	CASE SLIDE ROD GUIDE
4	398415	8	#8 X 1/2 SHEET METAL SCREW PAN HEAD PHILIPS	40	398308	1	CASE SLIDE ROD GUIDE SPRING
5	398326	1	MOTOR HOUSING	41	392011	2	10-32 HEX HEAD NUT
6	398375	2	4-40 HEX HEAD LOCK NUT	42	398289	1	MAIN BRACKET
7	398333	1	MICRO SWITCH	43	398299	1	CAM WIRE
8	398369	1	CASE FEED FUNNEL ASSEMBLY	44	398309R	1	SUB-PLATE (ON PRESS OR WITH RETROFIT KIT)
9	398376	1	4-40 X 5/8 BHSCS	45	398287	2	BRACKET, SQ. TUBING
10	398332	2	ROCKER SWITCH	46	398345	1	EJECT WIRE (ON SUB-PLATE #44)
11	398331	1	MOTOR	47	398312	2	1/4-20 X 1.25 SHCS
12	398328	1	MOTOR COVER	48	390128	4	1/4 FLAT WASHER ZINC PLATED
13	398320	1	FEED TUBE - LARGE	49	398284	1	CASE FEED STAND
14	398321	1	FEED TUBE - SMALL	50	398304	1	FEED TUBE END - SMALL
15	398303	1	FEED TUBE END - LARGE	51	398300	1	PIVOT ADAPTER BUSHING
16	398286	1	FEED TUBE MOUNTING BRACKET	52	398301	1	PIVOT BUSHING
17	396440	2	LOCK RING	53	398306	1	DROP TUBE - SMALL
18	398298	1	PIVOT ADAPTER	54*	O95310		CASE FEED PLATE- SMALL PISTOL
19	398290	1	PIVOT	55*	O95312		CASE FEED PLATE - LARGE PISTOL
20	398310	1	1/4-3/4 SHOULDER BOLT	56*	O95314		CASE FEED PLATE - SMALL RIFLE
21	398311	1	3/0 X 3/4 TAPER PIN	57*	O95316		CASE FEED PLATE - LARGE RIFEL
22	398305	1	DROP TUBE - LARGE	58	O59100		AP PRESS
23	398288	1	SPRING, TORSION	59	392338	1	10-24 X 1/2 SHCS
24	398317	1	PUSH ROD	60	398293	1	V-BLOCK #1
25	398371	1	PUSH ROD TIP	61	398297	1	V-BLOCK #2
26	390178	2	1/4-20 HEX HEAD NUT	62	398294	1	V-BLOCK #3
27	398349	1	PUSH ROD BUSHING	63	398292	1	V-BLOCK #4
28	398364	1	10 X 1/2 SHEET METAL SCREW PAN HEAD PHILIPS	64	398295	1	V-BLOCK #5
29	398344	1	PIVOT BODY	65	398296	1	V-BLOCK #6
30	398363	1	PUSH ROD SPRING	66	398324	1	PLASTIC FEED TUBE SMALL BUSHING
31	398343	1	CAM WIRE SUPPORT	67	390651	2	3/16" FLAT WASHER SAE
32	398425	1	E CLIP 1/4	68	390410	1	10-24 x 1/4 BHSCS
33	398373	1	PUSH ROD NUT	69	398370	1	CASE FEED BOWL BUSHING
34	398372	1	PUSH ROD LOWER	70	398388	2	1/4-20 X 1.50 SHCS
35	398314	2	5/16 -18 X 5/8 SET SCREW CUP	71	398416	1	O-RING 7/8 OD, 11/16 ID
36	398315	2	5/16 -18 X 5/8 SET SCREW CONE POINT (45 DEG.)	72	398550	6	RIVET POLY BLACK

**Chart 5: Bill of Materials.**

(\* Sold Separately) (Italics Pre Assembled)