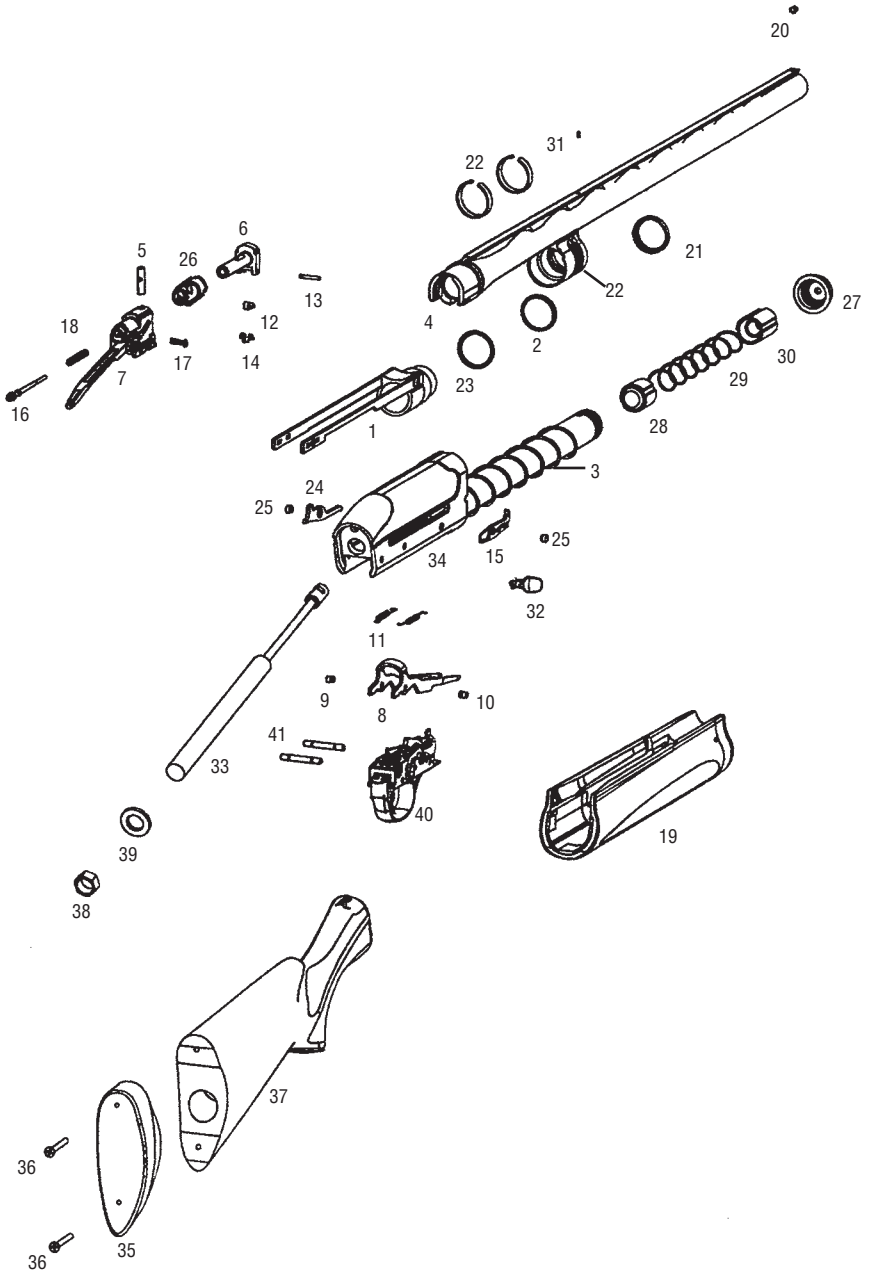


# MODEL 105 CTi™

## Autoloading Shotgun



# MODEL 105 CTi™

## Autoloading Shotgun PARTS LIST

---

VIEW #	PART NAME	VIEW #	PART NAME
	<b>NOTE:</b> Parts subject to change without notice FOB Ilion, New York.	34	Receiver & Magazine Tube Assembly (Restricted)
1	Action Sleeve Assembly	35	Recoil Pad
2	Action Sleeve Seal	36	Recoil Pad Screw (2)
3	Action Spring	37	Stock
4	Barrel	38	Stock Attachment Nut
5	Bolt Cam Pin	39	Stock Washer
6	Bolt Head	40	Trigger Plate Assembly
7	Bolt Slide Assembly	41	Trigger Plate Assembly Pins (2)
8	Carrier		
9	Carrier Pivot Pin - Left		
10	Carrier Pivot Pin - Right		
11	Carrier Spring (2)		
12	Extractor		
13	Extractor Pivot Pin		
14	Extractor Spring		
15	Feed Latch		
16	Firing Pin		
17	Firing Pin Retaining Pin		
18	Firing Pin Spring		
19	Fore - End		
20	Front Sight		
21	Gas Cylinder Seal		
22	Gas Cylinder Spring (2)		
23	Inner Seal		
24	Interceptor Latch		
25	Latch Retaining Screw (2)		
26	Locking Ring		
27	Magazine Cap		
28	Magazine Follower		
29	Magazine Spring		
30	Magazine Spring Retainer		
31	Middle Sight		
32	Operating Handle		
33	Rate Controller		