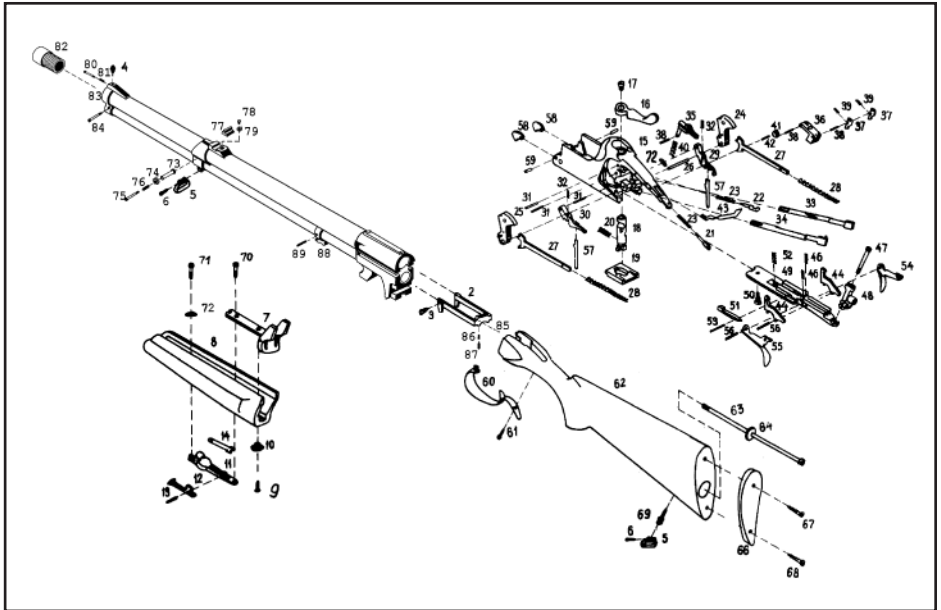


PARTS LIST

Exploded View SPR 94 Combination Rifle/Shotgun



List of SPR 94 Combination Rifle/Shotgun Components

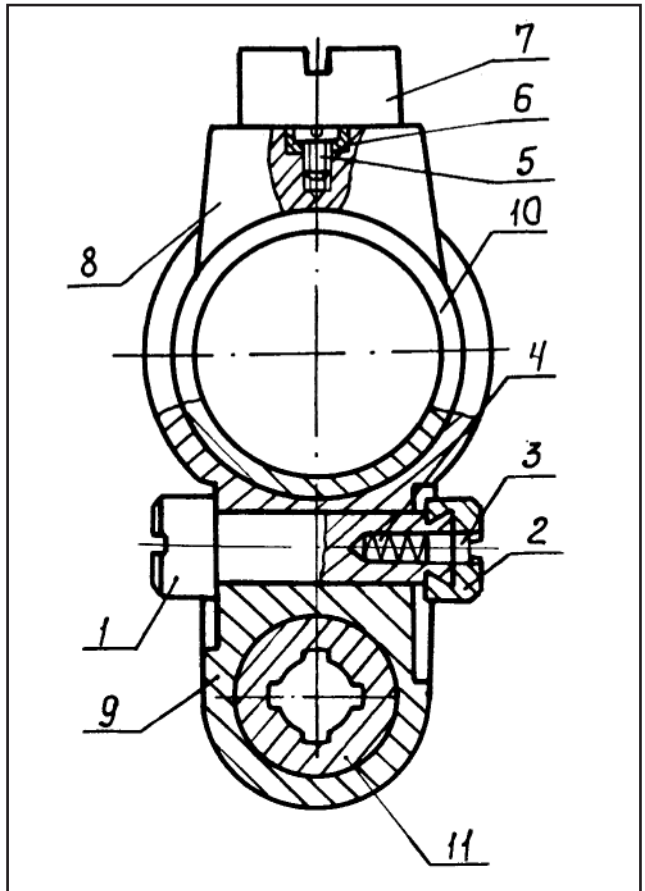
- | | | | |
|------------------------|-------------------------------|---------------------------------|---------------------------|
| 1. barrel assembly | 25. left-hand hammer assembly | 48. bridge | 74. adjusting rod locking |
| 2. ejector | 26. pin | 49. base plate | 75. plunger |
| 3. screw | 27. mainspring pivot | 50. screw | |
| 4. front sight | 28. mainspring | 51. locking strip retainer | 76. spring |
| 5. swivel ring | 29. right-hand sear | 52. spring | 77. rear sight |
| 6. pin | 30. left hand sear | 53. pin | 78. rear sight screw |
| 7. hinge assembly | 31. pin | 54. right-hand trigger | 79. washer |
| 8. fore grip | 32. spring | 55. left-hander trigger | 80. front sight plunger |
| 9. screw | 33. right-hand bolt plunger | 56. pin | 81. spring |
| 10. bush | 34. left-hand bolt plunger | 57. trigger bar | 82. screw-in choke |
| 11. catch casing | 35. safety lock button | 58. cock | 83. front bushing |
| 12. fore grip catch | 36. safety lock base | 59. pin | 84. pin |
| 13. pin | 37. safety lock | 60. trigger guard | 85. extractor catch pin |
| 14. spring | 38. pin | 61. woodscrew | 86. spring |
| 15. housing | 39. spring | 62. butt | 87. extractor catch |
| 16. locking lever | 40. spring | 63. screw | 88. hinge shoulder |
| 17. screw | 41. clip | 64. washer | 89. pin |
| 18. locking lever axle | 42. pin | 66. butt plate | |
| 19. locking strip | 43. slide | 67. woodscrew | |
| 20. recoil spring | 44. interceptor | 68. woodscrew | |
| 21. top striker | 46. spring | 69. swivel base | |
| 22. bottom striker | 47. screw | 70. screw | |
| 23. striker spring | | 71. screw | |
| 24. right-hand hammer | | 72. washer | |
| | | 73. changeable adjustable screw | |

Chart of Model SPR 94 Rifling Dimensions

Caliber of IZH94	Rifling Rate of Twist		Rifling Groove		Rifling Land	
	millimeter	inches	millimeter	inches	millimeter	inches
22WMR	406	15.98	5.69	0.224	5.56	0.219
.223 Remington	305	12.01	5.69	0.224	5.56	0.219
.308 Winchester	305	12.01	7.82	0.308	7.62	0.300
30-06 Springfield	254	10.00	7.82	0.308	7.62	0.300

Barrel Adjustment Mechanism of SPR 94

1. changeable adjusting rod
2. adjusting rod locking
3. plunger
4. spring
5. rear sight screw
6. washer
7. rear sight
8. rear sight base
9. sling swivel base
10. top (smooth) barrel
11. bottom (rifled) barrel



NOTE: Barrel preset for 100 meters. **Do not change unless necessary.**
 Additional: "Changeable adjusting rod" (1) required to change point of impact.